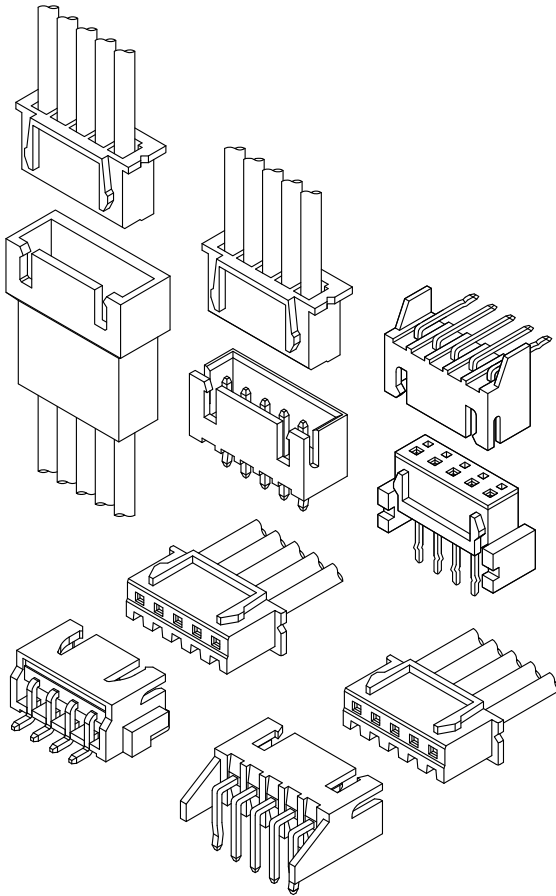


A2501 XH CONNECTOR

2.50mm Pitch/Disconnectable Crimp style connectors



- Secure locking structure
- Low insertion force
- Suction area for picking up
- Improvement of engagement with prying

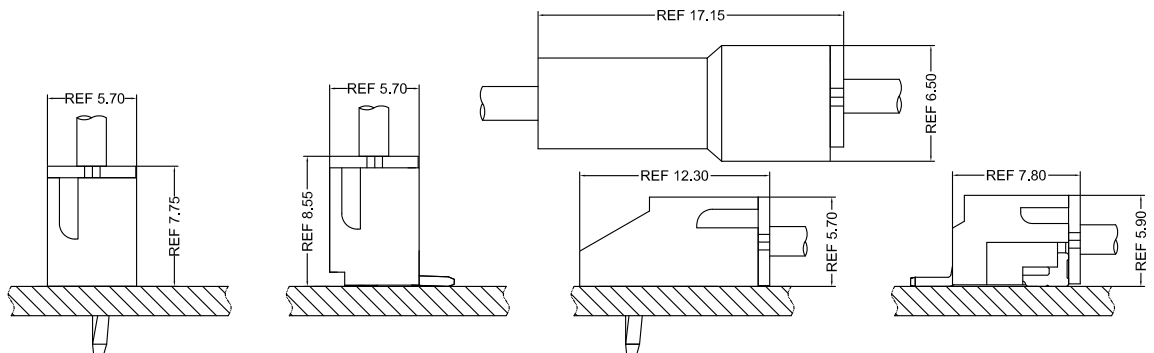
Specifications:

- Current rating: 3.0 A / AC,DC (AWG #22)
- Voltage rating: 250 V AC/DC
- Temperature range: -40°C ~ +105°C
(including temperature rise in applying electrical current)
- Contact resistance: Initial value/ 20m Ω max
Insulation resistance: 1000 M Ω min
Withstanding voltage: 1000 VAC/minute
Applicable wire: Conductor size/ AWG#28~#22
Insulation O.D./ 0.80 to 1.90 mm

- * Compliant with RoHS2/ HF/ REACH
- * Refer to "General Instruction and Notice when using Terminals and Connectors"
- * Contact CSG for details

Material:

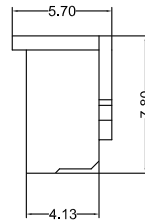
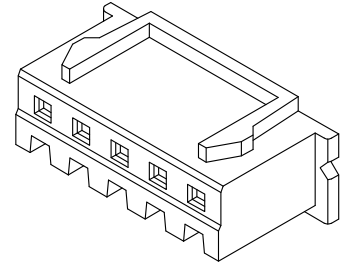
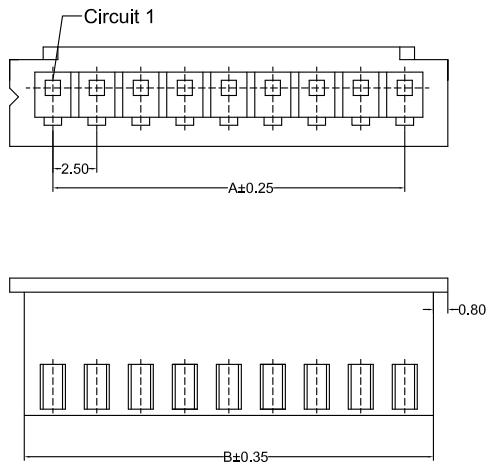
Housing: PA66/UL94-V0;Color:White
Terminal: Phosphor/ Tin-plated
DIP Wafer Housing: PA66/ PA46,UL94-V0;
Color:White/ Natural
DIP Wafer Pin: Brass/ Tin-plated
SMT Wafer Housing: LCP,UL94-V0;Color:Natural
SMT Wafer Pin: Brass/ Tin-plated
SMT Wafer Fixed Foot: Brass/ Tin-plated
B TO B Housing: PA66,UL94-V0;Color:White
B TO B Pin: Phosphor/ Tin-plated



- Note: 1. The above figure is the figure viewed from the connector mounting side.
2. Tolerances are non-cumulative: ± 0.08 mm for all centers.
3. The dimensions above should serve as a guideline. Contact CSG for details.

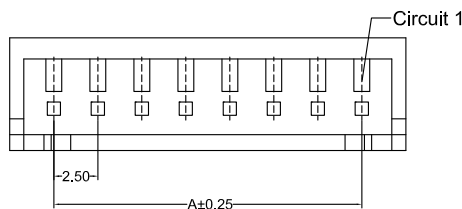
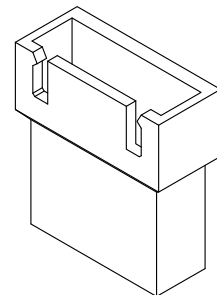
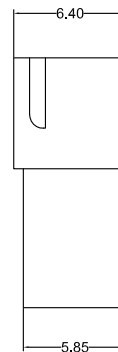
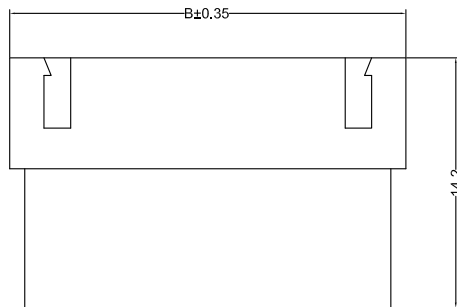


A2501 XH



A2501HF 0XX AA P6 9 XXX
 PIN 005=5PINS
 SPECIAL AA=NO Special
 Material P6=PA66 94V-0
 Code 005 008
 Color 9=White

CSG PART NO.	Dimension mm		Qty/BAG
	A	B	
A2501HF002AAP69XXX	2.50	5.50	1000PCS
A2501HF003AAP69XXX	5.00	8.00	1000PCS
A2501HF004AAP69XXX	7.50	10.50	1000PCS
A2501HF005AAP69XXX	10.00	13.00	1000PCS
A2501HF006AAP69XXX	12.50	15.50	1000PCS
A2501HF007AAP69XXX	15.00	18.00	1000PCS
A2501HF008AAP69XXX	17.50	20.50	1000PCS
A2501HF009AAP69XXX	20.00	23.00	1000PCS
A2501HF010AAP69XXX	22.50	25.50	1000PCS
A2501HF011AAP69XXX	25.00	28.00	1000PCS
A2501HF012AAP69XXX	27.50	30.50	1000PCS
A2501HF013AAP69XXX	30.00	33.00	1000PCS
A2501HF014AAP69XXX	32.50	35.50	1000PCS
A2501HF015AAP69XXX	35.00	38.00	1000PCS

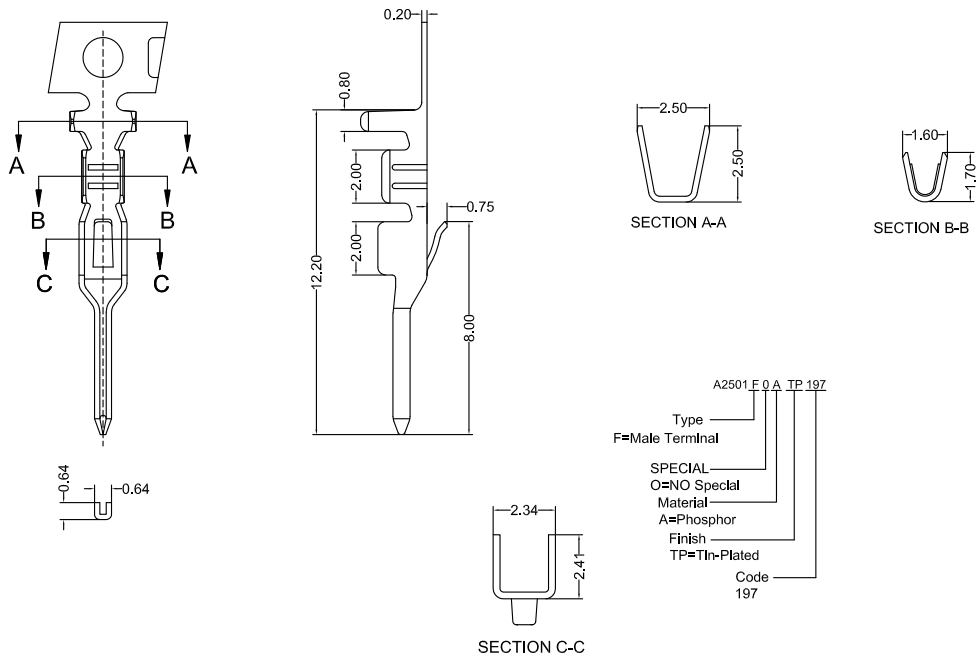


A2501HM 0XX AA P6 9 001
 PIN 005=5PINS
 SPECIAL AA=NO Special
 Material P6=PA66 94V-0
 Code 001
 Color 9=White

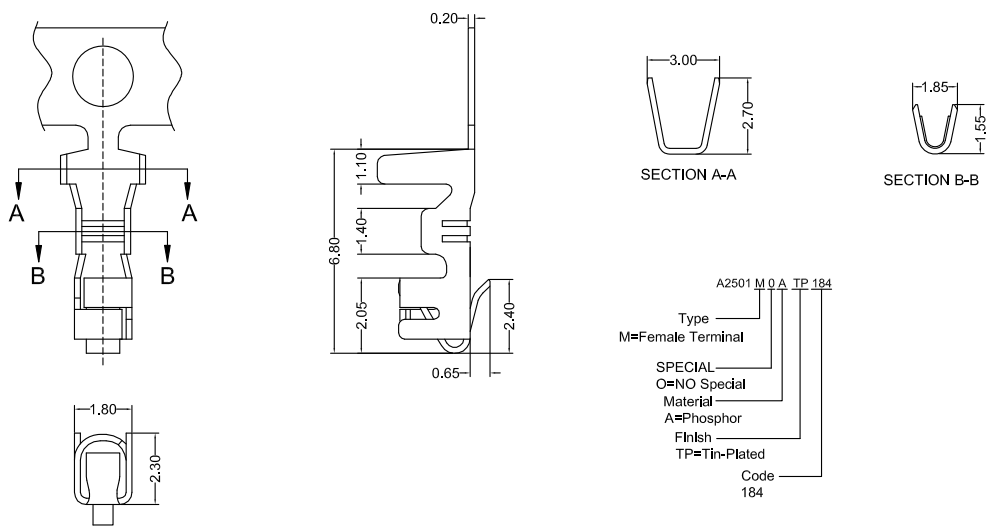
CSG PART NO.	Dimension mm		Qty/BAG
	A	B	
A2501HM002AAP69001	2.50	7.50	1000PCS
A2501HM003AAP69001	5.00	10.00	1000PCS
A2501HM004AAP69001	7.50	12.50	1000PCS
A2501HM005AAP69001	10.00	15.00	1000PCS
A2501HM006AAP69001	12.50	17.50	1000PCS
A2501HM007AAP69001	15.00	20.00	1000PCS
A2501HM008AAP69001	17.50	22.50	1000PCS
A2501HM009AAP69001	20.00	25.00	1000PCS
A2501HM010AAP69001	22.50	27.50	1000PCS
A2501HM011AAP69001	25.00	30.00	1000PCS
A2501HM012AAP69001	27.50	32.50	1000PCS
A2501HM013AAP69001	30.00	35.00	1000PCS
A2501HM014AAP69001	32.50	37.50	1000PCS
A2501HM015AAP69001	35.00	40.00	1000PCS



A2501 XH



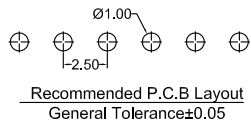
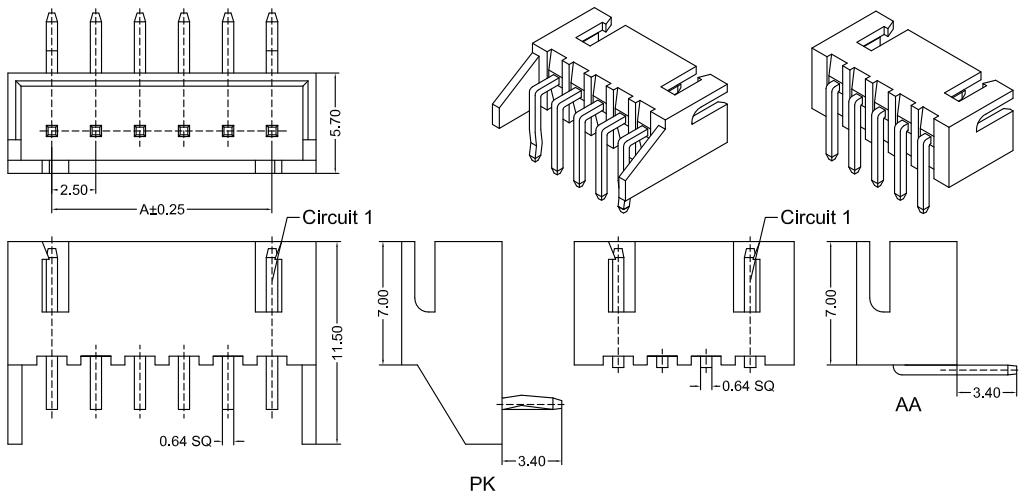
CSG PART NO.	Wire Range	Insulation O.D.	Q'ty/Reel
A2501F0ATP197	AWG#22-#28	1.80mm(max)	8000PCS



CSG PART NO.	Wire Range	Insulation O.D.	Q'ty/Reel
A2501M0ATP184	AWG#22-#28	1.80mm(max)	8000PCS



A2501 XH



A2501RD_0XX XX P6 TP C 9 008

PIN
002=2PINS

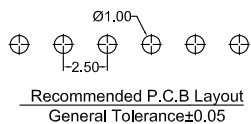
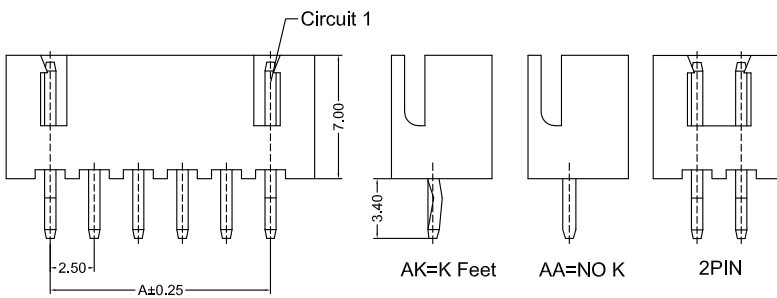
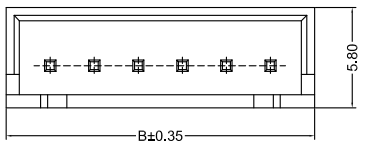
SPECIAL
AA=NO K
PK=Orientation K

Material
P6=PA66 94V-0

Finish
TP=Terminal Tin-Plated

Code
008
Color
9=White
Packing
C=Bag

CSG PART NO.	Dimension mm		Q'ty/BAG
	A	B	
A2501RD002XXP6TPC9008	2.50	7.50	1000PCS
A2501RD003XXP6TPC9008	5.00	10.00	1000PCS
A2501RD004XXP6TPC9008	7.50	12.50	1000PCS
A2501RD005XXP6TPC9008	10.00	15.00	1000PCS
A2501RD006XXP6TPC9008	12.50	17.50	1000PCS
A2501RD007XXP6TPC9008	15.00	20.00	1000PCS
A2501RD008XXP6TPC9008	17.50	22.50	1000PCS
A2501RD009XXP6TPC9008	20.00	25.00	1000PCS
A2501RD010XXP6TPC9008	22.50	27.50	1000PCS
A2501RD011XXP6TPC9008	25.00	30.00	1000PCS
A2501RD012XXP6TPC9008	27.50	32.50	1000PCS
A2501RD013XXP6TPC9008	30.00	35.00	1000PCS
A2501RD014XXP6TPC9008	32.50	37.50	1000PCS
A2501RD015XXP6TPC9008	35.00	40.00	1000PCS



A2501VD_0XX XX P6 TP C 9 008

PIN
002=2PINS

SPECIAL
AA=NO K
AK=K Feet

Material
P6=PA66 94V-0
P4=PA46 94V-0

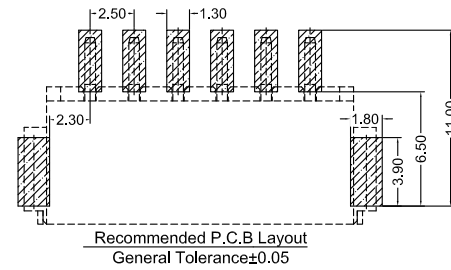
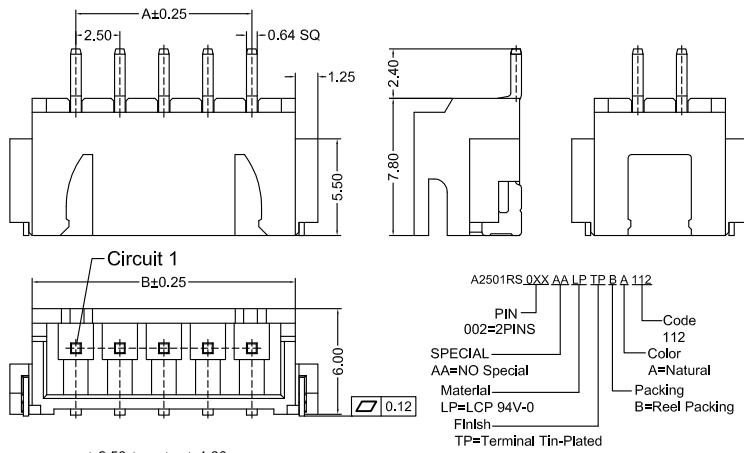
Finish
TP=Terminal Tin-Plated
GF=Terminal Gold-Plated

Code
008
001
Color
9=White
8=Grey
Packing
C=Bag

CSG PART NO.	Dimension mm		Q'ty/BAG
	A	B	
A2501VD002XXPXXXXXXX	2.50	7.50	1000PCS
A2501VD003XXPXXXXXXX	5.00	10.00	1000PCS
A2501VD004XXPXXXXXXX	7.50	12.50	1000PCS
A2501VD005XXPXXXXXXX	10.00	15.00	1000PCS
A2501VD006XXPXXXXXXX	12.50	17.50	1000PCS
A2501VD007XXPXXXXXXX	15.00	20.00	1000PCS
A2501VD008XXPXXXXXXX	17.50	22.50	1000PCS
A2501VD009XXPXXXXXXX	20.00	25.00	1000PCS
A2501VD010XXPXXXXXXX	22.50	27.50	1000PCS
A2501VD011XXPXXXXXXX	25.00	30.00	1000PCS
A2501VD012XXPXXXXXXX	27.50	32.50	1000PCS
A2501VD013XXPXXXXXXX	30.00	35.00	1000PCS
A2501VD014XXPXXXXXXX	32.50	37.50	1000PCS
A2501VD015XXPXXXXXXX	35.00	40.00	1000PCS



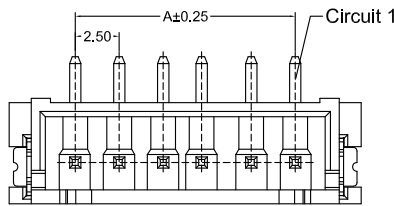
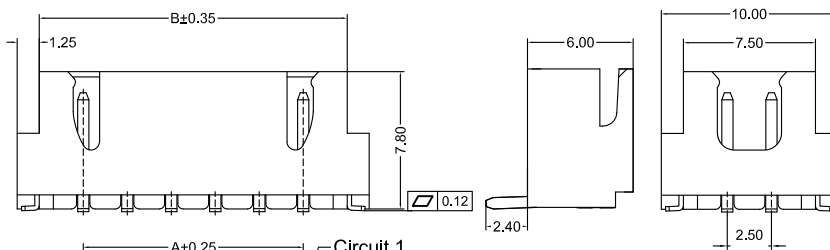
A2501 XH



Recommended P.C.B Layout
General Tolerance ± 0.05

A2501RS.QXX AA LP TP B A 112
 PIN
 002=2PINS
 SPECIAL
 AA=NO Special
 Material
 LP=LCP 94V-0
 Finish
 TP=Terminal Tin-Plated
 Code
 112
 Color
 A=Natural
 Packing
 B=Reel Packing

CSG PART NO.	Dimension mm		Qty/Reel
	A	B	
A2501RS002AALPTPBA112	2.50	7.50	700PCS
A2501RS003AALPTPBA112	5.00	10.00	700PCS
A2501RS004AALPTPBA112	7.50	12.50	700PCS
A2501RS005AALPTPBA112	10.00	15.00	700PCS
A2501RS006AALPTPBA112	12.50	17.50	700PCS
A2501RS007AALPTPBA112	15.00	20.00	700PCS
A2501RS008AALPTPBA112	17.50	22.50	700PCS
A2501RS009AALPTPBA112	20.00	25.00	700PCS
A2501RS010AALPTPBA112	22.50	27.50	700PCS
A2501RS011AALPTPBA112	25.00	30.00	700PCS
A2501RS012AALPTPBA112	27.50	32.50	700PCS
A2501RS013AALPTPBA112	30.00	35.00	700PCS
A2501RS014AALPTPBA112	32.50	37.50	700PCS
A2501RS015AALPTPBA112	35.00	40.00	700PCS



Recommended P.C.B Layout
General Tolerance ± 0.05

A2501VS.QXX AA LP TP B A 112
 PIN
 002=2PINS
 SPECIAL
 AA=NO Special
 Material
 LP=LCP 94V-0
 Finish
 TP=Terminal Tin-Plated
 Code
 112
 Color
 A=Natural
 Packing
 B=Reel Packing

CSG PART NO.	Dimension mm		Qty/Reel
	A	B	
A2501VS002AALPTPBA112	2.50	7.50	500PCS
A2501VS003AALPTPBA112	5.00	10.00	500PCS
A2501VS004AALPTPBA112	7.50	12.50	500PCS
A2501VS005AALPTPBA112	10.00	15.00	500PCS
A2501VS006AALPTPBA112	12.50	17.50	500PCS
A2501VS007AALPTPBA112	15.00	20.00	500PCS
A2501VS008AALPTPBA112	17.50	22.50	500PCS
A2501VS009AALPTPBA112	20.00	25.00	500PCS
A2501VS010AALPTPBA112	22.50	27.50	500PCS
A2501VS011AALPTPBA112	25.00	30.00	500PCS
A2501VS012AALPTPBA112	27.50	32.50	500PCS
A2501VS013AALPTPBA112	30.00	35.00	500PCS
A2501VS014AALPTPBA112	32.50	37.50	500PCS
A2501VS015AALPTPBA112	35.00	40.00	500PCS

